



Welcome and Thank You for Booking!!!

*We're excited and delighted that you will be staying in our suite for your trip to **Lower Lonsdale** — one of the most walkable and vibrant neighbourhoods on the North Shore with Vancouver's local mountains just a short drive away.*

During your time with us, enjoy being steps from:

- Morning coffee at Delany's on 3rd [**LINK**](#)
- Lonsdale Quay Market [**LINK**](#)
- The Shipyards District [**LINK**](#)
- The beautiful Harbourfront & Spirit Trail [**LINK**](#)
- Moodyville Park [**LINK**](#)
- SeaBus (quick connection to downtown Vancouver) [**LINK**](#)
- Tennis and basketball courts, soccer, bocce and a playground at Ray Perrault Park [**LINK**](#)

This website is great for activity ideas: [**https://www.vancouvernorthshore.com/**](https://www.vancouvernorthshore.com/)

If you need anything, send us a message via Airbnb — we're happy to help!



Wi-Fi

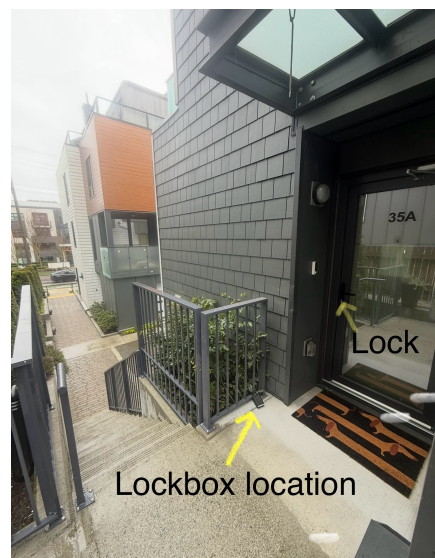
Network: TELUS3629

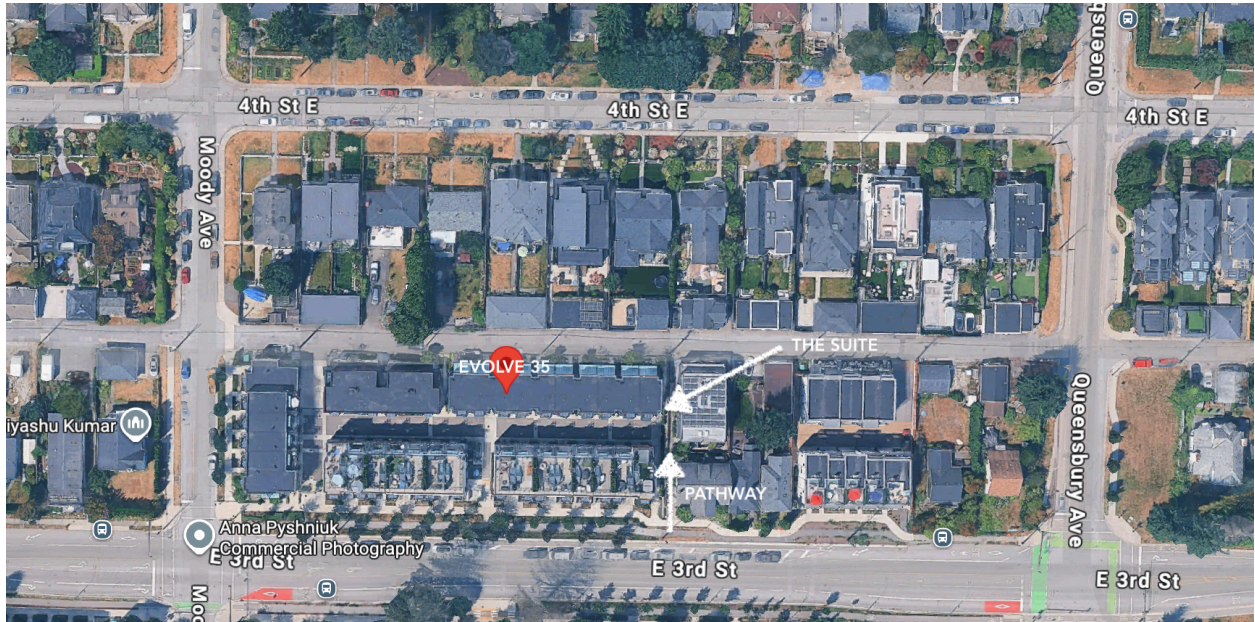
Password: nx7k3Gvz8tRczcKh



Check-In & Check-Out

- **Check-in:** 4:00 PM
Self-check-in via the lockbox at the front door. We will send you the code in advance. If there is anything we can do before arrival to make your stay more comfortable, please let us know.
- **Check-out:** 11:00 AM
Please secure the door when you leave and place the key back in the lockbox. Please also take garbage to garbage room.





Parking

Street parking is available nearby.

Please follow posted signs and pay attention to time limits on signage.

There is usually parking along 3rd Street in front of the development and a direct walkway from 3rd Street to the suite. 4th Street is a great option if 3rd is busy and there is also often parking along the side streets which are Moody Avenue and Queensbury Avenue.



Sleeping Arrangements

Sleeps up to 5 guests:

- **BEDROOM**
Queen bed with high quality mattress.
Single-sized trundle bed (upon request) which has a high quality Naturelle organic latex mattress. The trundle slides out on rollers from underneath the queen bed.
- **LIVING AREA**
Fold out sofa bed + additional cooling memory foam topper (bedding / topper upon request)
Linens and pillows for pullout are in the lower closet to the right of the sofa (when booked)

To unfold the sofa bed, first move the coffee table out of the way. Remove the cushions and then pull up and outward on the handle.



Kitchen & Coffee

During your stay you're welcome to use:

- Everything! Help yourself to all kitchen utensils, appliances and cookware but please no foods or cooking that emits strong odours.
- Nespresso coffee maker and milk foamer (located on countertop)
- Complimentary coffee & tea supplies
- Find dishwasher pods and detergent under the sink.

Please load the dishwasher before checkout if used. Dish detergent pods are under the sink.

HOW TO USE THE NESPRESSO MACHINE:

INSTRUCTIONAL GUIDE

- 1 Rinse then fill the water tank with potable water. The water tank can be carried by its cover.
- 2 Switch the machine on. Blinking light: heating up for approximately 25 seconds. Steady light: ready.
- 3 Lift the lever completely and insert the capsule.
- 4 Close the lever and place a cup under the coffee outlet.
- 5 During heat up, you can press the coffee button when it's still blinking. The coffee will then flow automatically when the machine is ready.
- 6 For a Latte Macchiato glass fold the cup support into the upright position. It will automatically fall down again when removing the glass to avoid any drips falling on to your kitchen surfaces.
- 7 Press the Espresso (40 ml) or the Lungo (110 ml) button. Preparation will stop automatically. To stop the coffee flow or top up your coffee, press again.
- 8 Take the cup. Lift and close the lever to eject the capsule into the used capsule container.



HOW TO USE THE WILLOW DIGITAL KETTLE:

OPERATIONS

POWERING ON:

- Plug in the power. The digital screen and button indicators will light up for 1 second before entering standby mode.
- If a kettle is present, the real-time water temperature and °F mark will be displayed. Otherwise, "---" will be shown.
- After lifting the kettle and placing it back, the digital screen and button indicators will light up again for 1 second.

MODE SELECTION:

- Press the "MODE" button to select a preset function. Each press will emit a buzzer sound and cycle through preset temperatures:
 - Green Tea/175°F
 - White Tea/185°F
 - Oolong Tea/190°F
 - Coffee/200°F
 - Black Tea/205°F

NOTE: Press and hold the "MODE" button for 3 seconds to turn off all notification sounds.

TEMPERATURE ADJUSTMENT:

- Use the "+/-" button to adjust the preset temperature.
 - Short press to cycle through preset temperatures, with each press increasing by 5°F.
 - Long press to increase by 10°F.
 - Adjust the temperature range from 100°F to 212°F. Press the "ON/OFF" button to confirm the set temperature and begin heating.

ON/OFF FUNCTION:

- Press the "ON/OFF" button to start heating. Once the product reaches the set temperature, it stops heating, emits three buzzer sounds, and enters standby mode. If no function is selected, standby mode activates after 3 seconds.

KEEP WARM FUNCTION:

- Press the "Keep Warm" button to activate the function. The indicator light will turn on.
- Press the "+/-" button (long press) to adjust the keeping warm time in 30-minute increments.
- After setting the desired time, press the "ON/OFF" button to begin the heat preservation mode. The maximum insulation temperature is 203°F.
- If the kettle is not placed back within 2 minutes while working or keeping warm, the operation will be automatically canceled.

ERROR INDICATORS:

- Error codes may display:
 - E1: Temperature probe short-circuited.
 - E4: Boil-dry or over-temperature, thermostat tripped (no power).

OPERATIONS





Entertainment

Smart TV with popular streaming apps.

Feel free to log into your accounts — just remember to sign out before checkout.



Garbage & Recycling

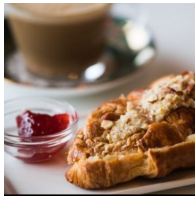
Bins are located on the west side of the development in a locked room with access from the lane behind 3rd Street. **You have a key to the garbage & recycling room on your keychain.** If you walk down the bricked drive between all the townhouses (the area with the lights crisscrossed above) to the very end and then turn right, the garbage room will be on the corner by the back lane.

Please sort garbage, recycling, and compost (if applicable).

Local Lower Lonsdale Food & Drinks

Below you will find a selection of some great places within walking distance. If you're open to going further afield, you can also find a solid list of North Shore restaurants on the Vancouver North Shore website here:

<https://www.vancouvernorthshore.com/explore/eat-drink/>

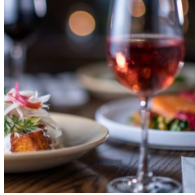


Coffee & Breakfast Spots

- **Delany's on 3rd at Innova** - North Shore favourite for coffee, snacks and light bites.
- **BLVD Bistro** - Head east a couple blocks to less visited Queensbury Village to find this great brunch spot. Montreal Bagels is across the street!
- **Catch 122 Cafe Bistro** — Local favourite for breakfast & coffee, casual vibes.
- **Jam Cafe - Lonsdale** — Popular brunch spot with hearty classic breakfast.
- **49th Parallel Café & Lucky's Doughnuts - Lonsdale** — Coffee and fresh doughnuts, perfect morning stop.
- **Shipyards Coffee** — Local coffee shop at the Quay with pastries & drinks.
- **Nemesis Coffee** — Local coffee shop by the Polygon Gallery with light meals & drinks.

Find a few more options here:

<https://theshipyardsdistrict.ca/eat/cafes-coffee-shops>



Restaurants

- **JOEY Shipyards** — Waterfront dining with diverse menu & elevated comfort food.
- **Tap & Barrel • Shipyards** — Classic pub fare & local brews with stunning downtown views.
- **Kitchen Craft Eatery** — Highly rated spot for lunch or casual dinner.
- **Fishworks** — Fresh seafood on Lonsdale Avenue.
- **Burgoo Bistro Lonsdale** — Comfort food with seasonal ingredients.
- **Anatoli Souvlaki** — Greek and Mediterranean classics.
- **The Gull Bar and Kitchen** — Great cocktails and seasonal fare.
- **Fiorino, Italian Street Food Lonsdale Quay** — Quick Italian eats near the Quay.
- **King Taps** — Relaxed spot for pizza, wings, and local beers at Lonsdale Quay.
- **Nook** - A neighbourhood restaurant that serves good pizza, pasta and antipasto.

Tip: Lots of restaurants are in the Shipyards District and around Lonsdale Quay — ideal for lunch or a stroll.



Breweries & Pubs

Lower Lonsdale is becoming a craft beer destination. Some top picks:

- **Copperpenny Distillery** — Award winning distillery and cocktail lounge - the first in the City of North Vancouver.
- **Beere Brewing Company** — Craft brewery with good beers & outdoor vibe.
- **Streetcar Brewing** — Local brewery with classic brews.
- **La Cerveceria Astilleros - Lower Lonsdale** — Latin-inspired brews & drinks.
- **North Point Brewing Co** — Cozy brewery with rotating taps.
- **Braggot Brewing** — Smaller craft producer with unique styles.

(There are many more breweries in the area worth exploring.)

A few more ideas: <https://theshipyardsdistrict.ca/eat/breweries-pubs>

Check-Out Instructions

Before you go kindly:

1. Wash/load dishes
2. Return furniture to original positions
3. Gather used towels
4. Put garbage & recycling in garbage room
5. Lock the door when you leave and return key to lock box.



We'd Love Your Review!

If you enjoyed your stay, leaving a positive review really helps small hosts like us a lot.
We would be incredibly grateful!!!