

Marie O'Connor

778.321.0091
marie@marieoconnor.ca
www.marieoconnor.ca

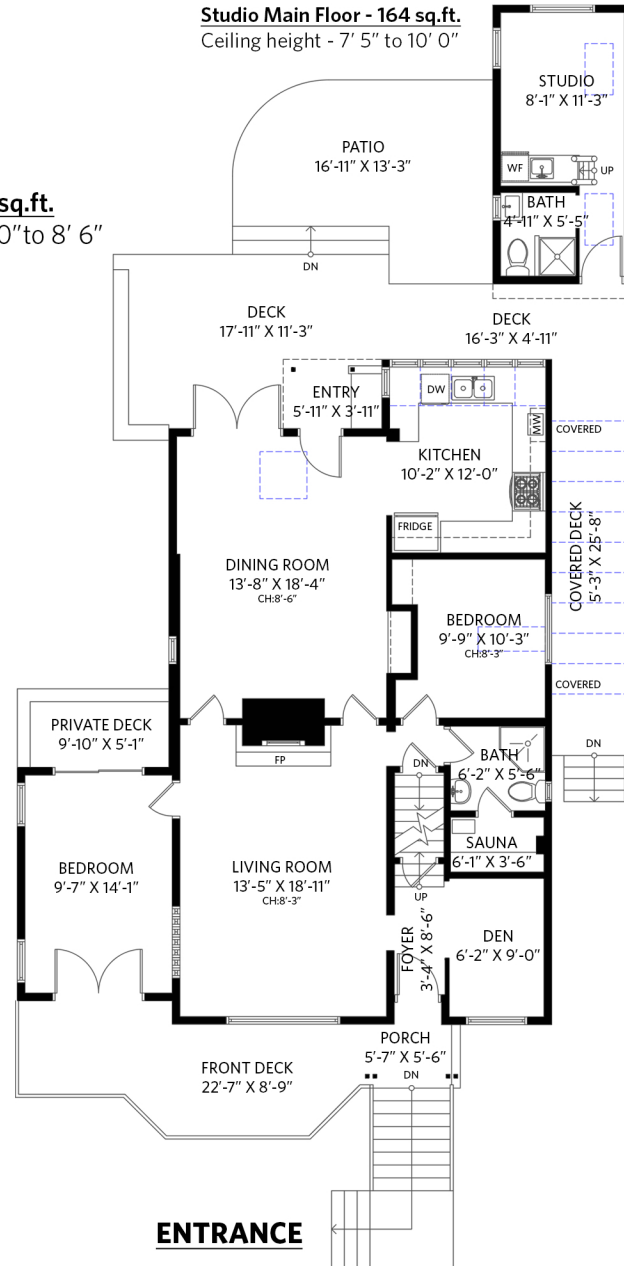
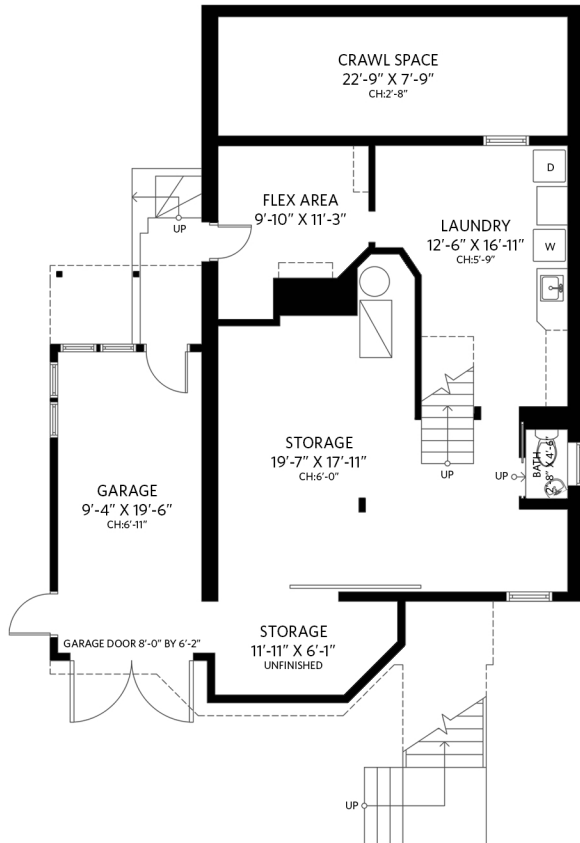


2076 Panorama Drive North Vancouver, BC

5 bedrooms + den + studio + 3 1/2 bathrooms

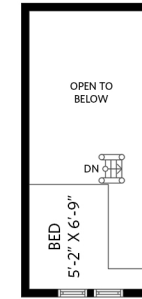
Main Floor - 1,157 sq.ft.
Ceiling height - 8' 0" to 8' 6"

Lower Floor - 751 sq.ft.
Ceiling height - 5' 9" to 6' 11"

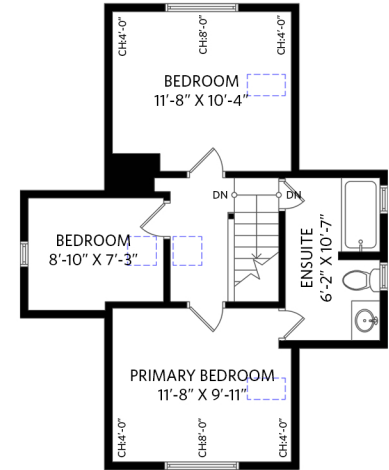


Studio Main Floor - 164 sq.ft.
Ceiling height - 7' 5" to 10' 0"

Upper Floor - 495 sq.ft.
Ceiling height - 4' 0" to 8' 0"



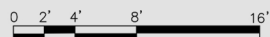
Studio Upper Floor - 47 sq.ft.
Ceiling height - 2' 11"



Lower Floor: 751 sq.ft.
Main Floor: 1,157 sq.ft.
Upper Floor: 495 sq.ft.
Total Interior: 2,403 sq.ft.

Studio Main Floor: 164 sq.ft.
Studio Upper Floor: 47 sq.ft.

Attached Garage: 206 sq.ft.
Unfinished Storage: 76 sq.ft.
Exterior Living: 839 sq.ft.
Crawl Space: 211 sq.ft.



Floor plan measurements, dimensions, square footage, existing structures & features are approximations and for illustrative purposes only. E&O insured for \$1,000,000

